



Admin Guide


Table of Contents

CumuloLogic Admin Console.....	3
Manage PaaS:	3
Template Management:	3
Add Target Cloud:	5
Manage Settings:	6
Manage Users:	7

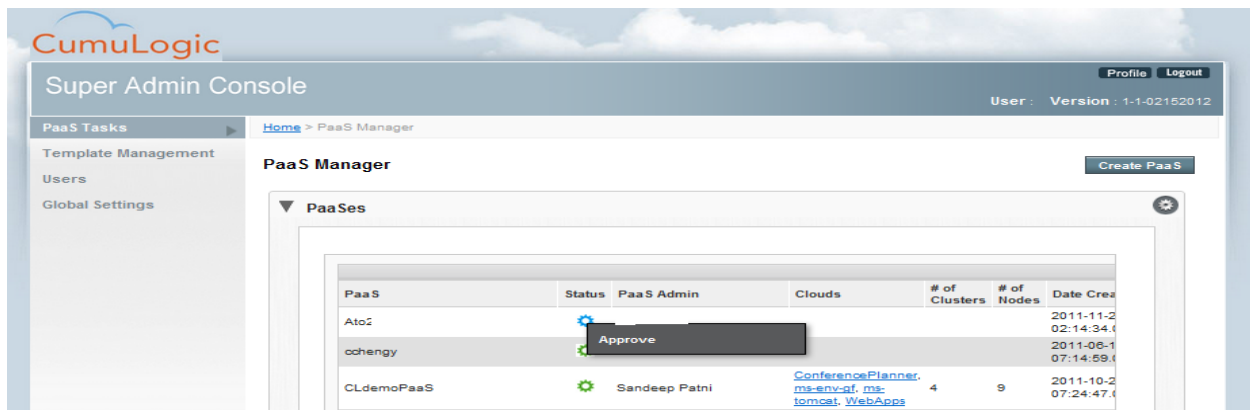
CumuloLogic SuperAdmin console

You can login to CumuloLogic PaaS as Admin user to access Super Admin Console. Here you can perform the admin functions. The default password is admin/admin.

Manage PaaS:

You can register multiple users and each one will have a PaaS. You can manage paas instances from this screen. When a user registers on your paas, after they successfully validate their email/passwd etc, the PaaS account needs to be activated by Admin user by clicking on the  icon, and Approve. Once approved, the user will receive email notification and will be able to login and start using PaaS.

Admin can see Env names, # of clusters, # of ndoes etc in each paas account.

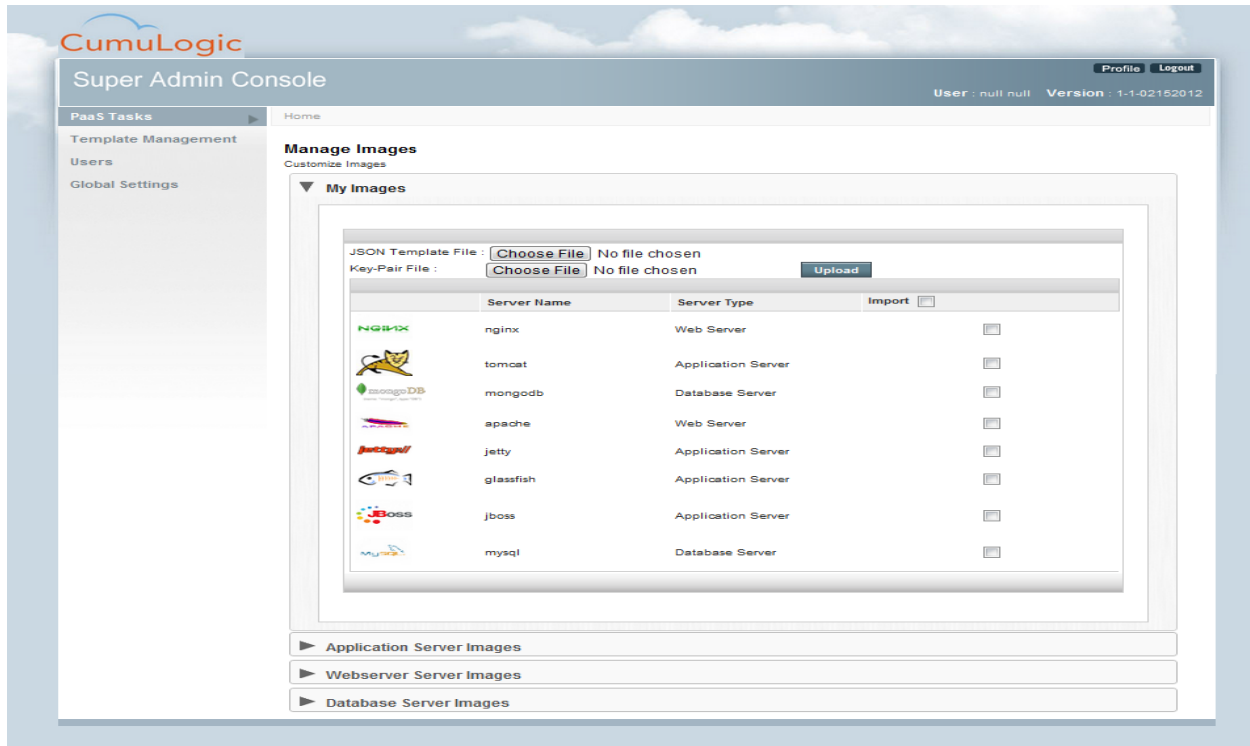


You can also create a paas from this screen by clicking on Create PaaS.

Template Management:

The image repository contains templates for CumuloLogic supported infrastructure components. In order to add these to your repository, you need to import the required image templates for the given cloud type from the available repository. You can import multiple templates at once. The Repository contains image templates for all cloud types, which you can select and import

Please make sure you have at least one base image registered and working on your target cloud. You should be able to launch a vm on your target cloud with that base image outside of CumuloLogic PaaS. The base image should have JDK installed and have JAVA_HOME set in /etc/profile. If you don't have it already you a base image you can download one from the IaaS vendor (eucalyptus/cloud.com etc).



CumuloLogic provides a framework which allows you import your images to CumuloLogic PaaS and manage it, as long as the images are one of supported OSs. Currently CentOS 5.4 or later, RHEL-5.4 or later are supported. Although Fedora has not been tested, but should still work.

You can import the images from "My Images" section on the Template Management screen in Super Admin console.

Copy below sample json template file and edit it with the information about your image, so that it can be correctly identified in the repository.

Sample Json Template file:

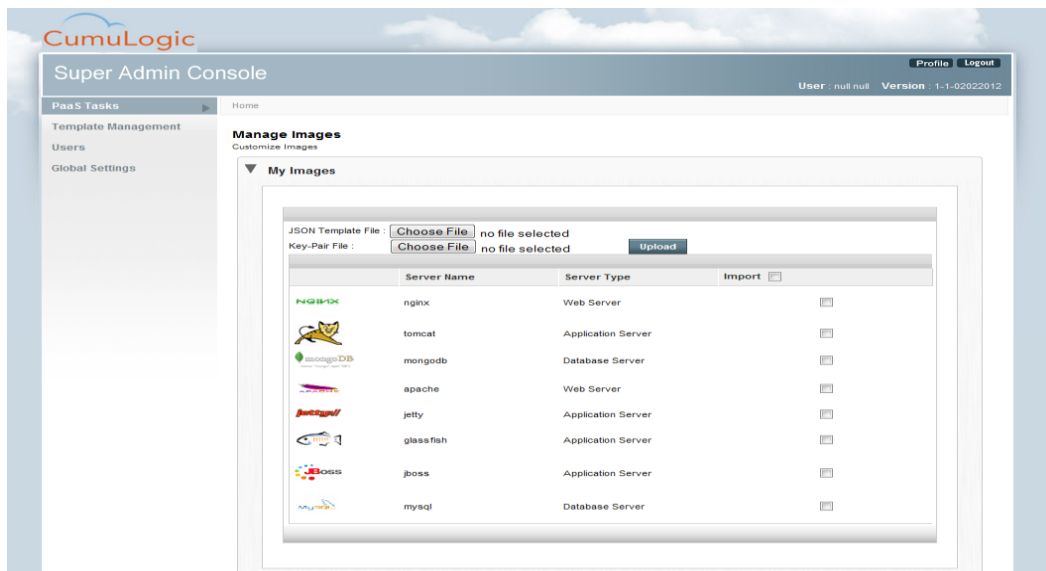
```
{
  "TemplateVersion" : "0.1.2",
  "ImageName" : "Euca Cloud Base",
  "ImageProviderName" : "CumuloLogic",
  "Description" : "Euca Base Image",
  "OSName" : "CentOS",
  "OSVersion" : "5.6",
  "ImageArch" : "x86_64",
  "ImageStatus" : "Beta",
  "CreatedDate" : "December 22 2011",
  "ModifiedDate" : "December 22 2011",
  "Eucalyptus" : "emi-7B3A1F39",
  "InstanceType" : "m1.large"
}
```

Update the above sample template with appropriate information. Image Name, Provider Name, Description etc. Specify the imageID for the image you are importing along with the CloudType and InstanceType.

Example:

Citrix/Cloud.com - "CloudStack" : "<ImageID>"
 Amazon EC2 - "Amazon EC2" : "<ami-xxxxxxx>"
 Eucalyptus - "Eucalyptus" : "<emi-xxxxxxx>"
 VMware - "VMware" : "<image ID>"
 OpenStack - "OpenStack" : "<image-ID>"

Once the json template file is ready, you can import it from the My Images screen along with the SSH key for your image. SSH key is required for CumuloLogic PaaS to access the image for post provisioning configuration. For Ec2/Eucalyptus, we can create a new key at runtime, but for cloudstack we need to get the key file.



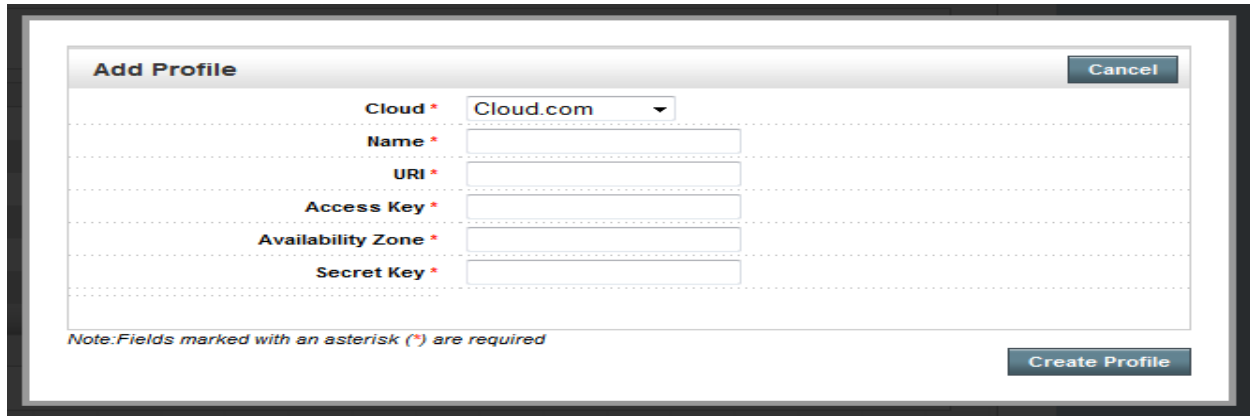
Select the json template file and key, then select the images you need added from the list. You can choose to use the same base os for app/web/db or import different templates for each. Once you choose the components you need to add to your repository, click "Upload". Upon successful import, the images will be added to the repository.

You can now go to the "Add Target Cloud" section, to add Target Cloud information for the image you just imported, so that the images will become available for users.

Add Target Cloud:

Once the image templates are imported, they are not usable until valid Target Cloud credentials are added.

You can add the Target Cloud by editing Profile => Target cloud => Add. Select your cloud Type and enter Name/URI/AccessKey/Secret Key and click Create Profile.



Note:

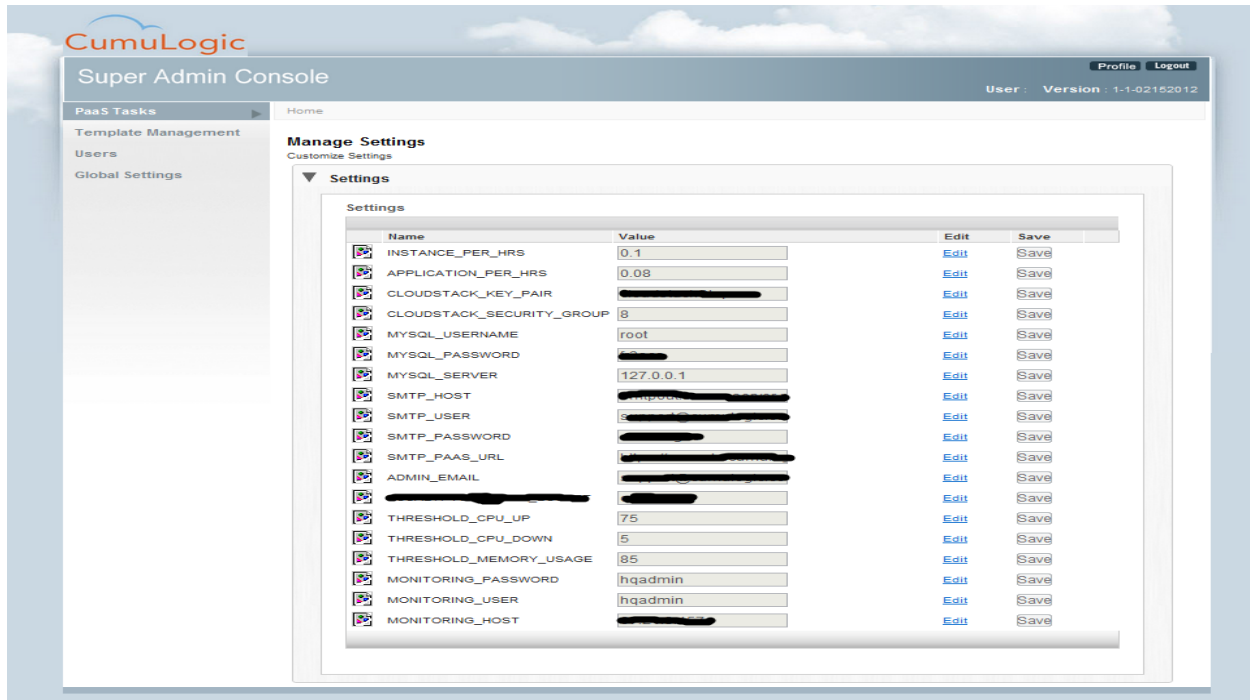
- If you are using Openstack cloud with Keystone security implementation, then you will need to provide Tenant ID in addition to Secret Key/Access Key in the profile.
- If you are using Cloudstack, then you will need to provide Zone ID in the profile.

The Admin can add target cloud and assign it to the PaaS users, so they don't need to re-enter the access credentials. This can be done by clicking on "edit" under Target cloud, and select user from the list, and then update profile.

The target cloud added in profile becomes available to select in a dropdown during Create Resource Pool or Shared Services. Read more about it in User Guide.

Manage Settings

Here you can manage some of the global settings for the CumuloLogic PaaS. Some of the setting values are updated from the cumuloLogic.properties file provided during the install and others are system defaults.



Settings:

Most of the settings like Mysql user/password, SMTP user/password, Admin Email etc are taken from cumulogic.properties file, so you may not need to change these.

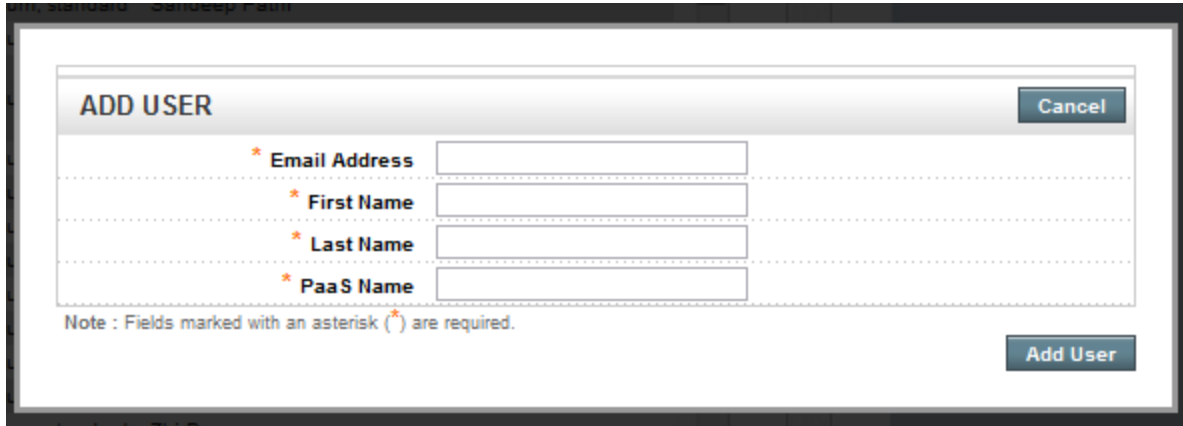
THRESHOLD_CPU_UP/ THRESHOLD_CPU_DOWN/ THRESHOLD_MEMORY_USAGE : You can set Autoscaling threshold for the environment by updating these values.

INSTANCE_PER_HRS / APPLICATION_PER_HRS: These are the IaaS and PaaS cost in \$. These values are used to calculate the cost of Application and IaaS cost on Usage Reporting screen under PaaS Admin screen. Refer to User Guide for details on Usage Reporting section. You can set these to reflect your internal cost calculation multiplier.

CLOUDSTACK_KEY_PAIR/ CLOUDSTACK_SECURITY_GROUP: These are cloudstack specific parameters. Key_Pair gets populated from the key provided while importing the image. You can specify the security group ID you are using in your cloudstack install.

Manage Users:

There is default user "cumulogic/cumulogic" created for your convenience. You can register more users by clicking Add User and follow on-screen instructions.



ADD USER		Cancel
* Email Address	<input type="text"/>	
* First Name	<input type="text"/>	
* Last Name	<input type="text"/>	
* PaaS Name	<input type="text"/>	

Note : Fields marked with an asterisk (*) are required.

Add User

Please refer to the Getting Started and User Guide at <http://www.cumulogic.com/resources/documentation> to get started with CumuloLogic PaaS.